

WE ALSO PROVIDE  
FULL RANGE SUPPORT



LIANXIANG HARDWARE  
连翔五金

# FASTENERS

我们不断在技术和品质上为您创造价值  
We create value continuously to our customers  
on technology and quality



LIANXIANG HARDWARE  
连翔五金



浙江连翔五金科技股份有限公司

浙江省海盐县秦山街道秦山大道100号

电话: 0573-86112919 0573-86122676

传真: 0573-86122733 邮编: 314303

邮箱: sales@cnlianxiang.com

网站: http://www.cnlianxiang.com

ZHEJIANG LIANXIANG HARDWARE SCIENCE AND TECHNOLOGY CO.,LTD

No. 100 Qinshan Road, Qinshan Street, Haiyan County, Zhejiang Province, China

TEL:0086-573-86112919 0086-573-86122676

FAX:0086-573-86122733 CODE:314303

E-mail:sales@cnlianxiang.com

http://www.cnlianxiang.com

浙江连翔五金科技股份有限公司

ZHEJIANG LIANXIANG HARDWARE SCIENCE AND TECHNOLOGY CO.,LTD

[www.cnlianxiang.com](http://www.cnlianxiang.com)





# About us 公司简介

浙江连翔五金科技股份有限公司成立二十余年来，一直全心全意致力于建筑、电力、新能源、石化、机械工程等基础工业方面的支架、管道、吊配管系统的专业领域研发和生产。逐渐在世界市场处于领先地位。依托专业化的工厂，公司一贯给客户最多的利益，让客户满意。

浙江连翔五金科技股份有限公司从不同的行业渠道去了解各种信息，为市场开发着各种不同的支架、吊悬架系统产品。其为数众多的专利产品结合内部工程的设计投入及对业界需求的关注，并结合先进的生产制造流程，所有的一切要靠专业化得以实现。

浙江连翔五金科技股份有限公司新时代支、吊、挂、配管系统，代表创新、节省时间、在您追求各项施工规范标准认证、赶节点的同时，提供着最高品质的优化产品及最佳的施工典范。

浙江连翔五金科技股份有限公司使你一切变得简单！帮您找到您所需要的安装解决方案。连翔支架吊配管系统，提供安装简便及经久耐用的各种表面处理及材质：如热浸锌、烤漆、喷丸、电镀等等、连翔产品通过严格的测试要求，其中许多产品已经通过UL认证及FM认证，其创新的理念设计让安装更加快速。

浙江连翔五金科技股份有限公司产品除了省时、省力外的解决方案，我们更提供优越的客户及技术支持服务，不论在常规环境还是在各种特殊环境下的支架、悬吊系统领域，未来的市场属于连翔！

请相信连翔是您最值得信赖的品牌。

Zhejiang Lianxiang hardware Science and Technology Co.,Ltd. has been built for more than 20 years. We have been devoting ourselves in the products of brackets, channels, pipe support systems in the area of construction, electricity, new energy, petrochemical, mechanical engineering and other industries. We are leading the global world gradually.

Meeting our customers' requirements and making them satisfied is our goal, which is realized by our factory's specialization.

We get various information from different industries, and then develop different kinds of brackets and pipe support products. Our patent products are combined with domestic project design, they can meet the world's latest requirements.

Our new support and hanging systems represent innovation and time-saving. We can provide you the best example of construction while you are pursuing for all regulations and certifications.

We make everything easy, helping you find the best installation solution that you need. Our brackets and pipe support system has different surfaces, like hot dip galvanizing, powder coating, sand washing, zinc plated, etc. Our products are strictly tested. Many of them have got UL and FM approved, the innovative design makes the installation easier and quicker.

Besides our saving time and energy solutions, we also provide excellent technology supporting service in special environment of hanging fields.

The future market belongs to Lianxiang!

We are your most reliable brand!





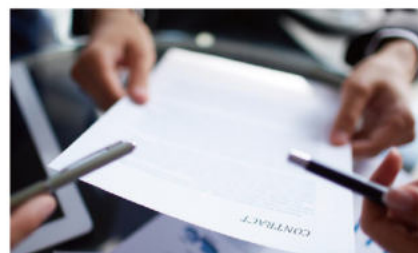


## 提供标准、非标零件的解决方案

### PROVIDE THE SOLUTION FOR STANDARD AND NON-STANDARD PARTS

标准件及非标五金件一般占客户成本的1%-5%，但因品种繁多、专业性强，导致很多客户为之花费30%以上的采购，开发的人力成本。为解决此类问题，我公司推出紧固件五金件打包服务，给客户专业、满意的解决方案，从而节省客户至少30%以上的采购，开发的人力成本，以及因客户对标准、非标零件的不专业所造成的潜在损失，从而给客户带来增值的服务。

Standard and non-stand hardware general accounts for 1% to 5% of the costs of the customer, many customers cost more than 30% human cost on the purchase and exploitation because of numerous in variety and strongly professional. So we push the fasteners and hardware package service to provide professional solution for our customers, it can save more than 30% human cost on the purchase and exploitation and avoid the potential loss that made by the un-professional of customers. It can bring value-added services for our customers.



## 专人服务

### PERSONALIZED SERVICE

我们的客服中心为长期合作的客户提供专人服务，全面建立订单跟踪流程，主动为客户实现订单的流程化管理，保证每一张订单的准时交货。我们还为战略合作的客户增设提供专属产品配货，专属区域存放管理的特殊服务。

The Our service center provide personalized service for the long term customer, comprehensively establish order tracking process, actively achieve order processing management for customers, in order to ensure every deliver on time. We also add exclusive product rationing for our strategic partnership customers, and special services of storage management in the exclusive area.



## 安全库存

### SAFETY STOCK WARNING

我们的仓库及生产全部统一的ERP编码管理，并根据相关的产品最终应用信息，定期和客户共同研究当月消耗，设定安全库存，时刻保持仓库有充足的货源，将客户的断货风险降到最低点。

Our warehouse management system and production management do the ERP code management for our customers, and research on the month-consume with customer regularly according to the final application information of the relative products, set safety stock, we will keep enough products in our warehouse, and reduce the stock shortage risk to the minimum.



## 经营理念

### OPERATING PRINCIPLES

品质、效益、双赢、诚信

Quality Efficiency Win-Win Honesty

## QUALITY POLICY 质量方针

诚信、品质、追求梦想

Honesty Quality Pursue Dreams

创新、节约时间、责任

Creative Time Saving Responsibility

安全、环保、客户至上

Safety Environmental Protection Customer First

我们有一套完备的检测系统，确保提供给客户的产品都是安全可靠的。

我们深知品质是我们的生命，品质是企业的形象。

We have a set of complete testing system in order to insure that the products are safety and reliable.

We deeply know that quality is the life and quality is corporate image.

ISO9001 UL FM CE是我们的行动、行为规范指南。

我们有责任要对得起已通过的各项认证。

ISO9001, UL, FM, CE are our action and code of conduct guidelines.

We have a responsibility to live up to our certification.



通过ISO9001:2000  
质量管理体系认证



## 行业领域 INDUSTRY AREA



建筑工程 Construction Engineering



汽车 Automotive



新能源 New Energy



消防 Fire Control



电力 Electricity



管道暖通 Heating and Ventilation



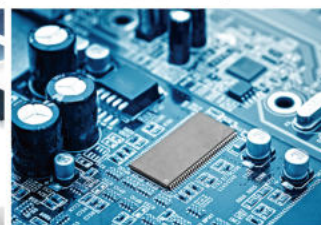
石化 Petrochemical Industry



核电 Nuclear Power



机场 Airport



电子 Electronic



家电（空调） Household Appliances (Air Condition)



机械 Machinery



轨道交通 Rail Transit



家居 Home Furnishing





# Workshop 车间一角

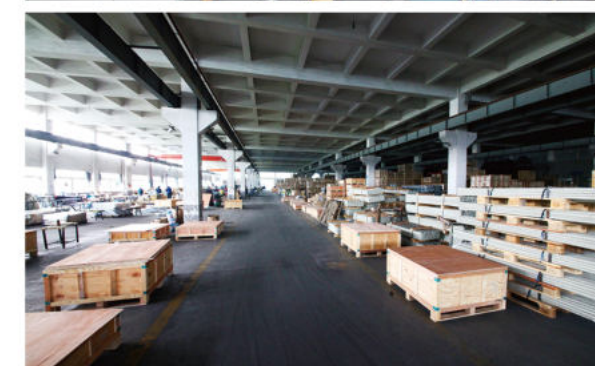


科技兴国，实力图存，先进的设备、使连翔驻足于国内五金行业的前沿，一流的设备在提高效率，提升产品品质的同时，更为大批专业化、年轻化、知识化的员工提供了施展才华的支撑。

连翔追求严谨的工作态度、完美的产品质量。整个工艺流程是一个有机整体，每一个环节都紧密相连。人无我有，人有我优，追求完美。我们的宗旨：质量第一兴连翔，顾客满意求发展。

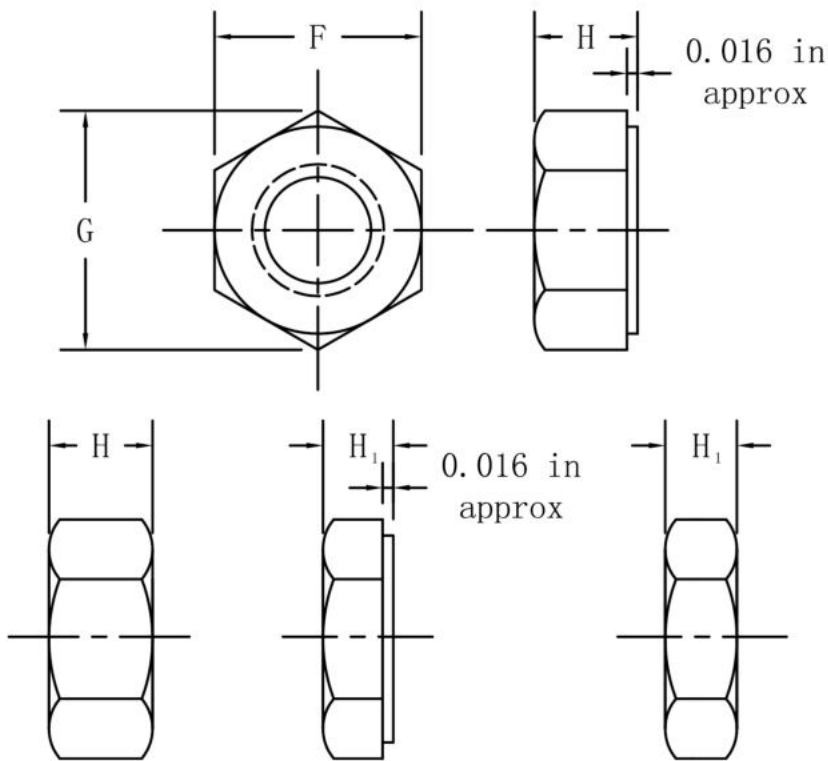
Science and technology, powerful strength, advanced equipment make Lianxiang always be leading in this industry. First class equipment not only greatly improved the working efficiency and product quality, but also provide a good support for our staff to show their talents.

Lianxiang seeks for serious working attitude, perfect product quality. The whole tech process is a organic whole. Every step is closely connected. Our principle: Quality first to make Lianxiang succeed, Customers' satisfaction for better development.



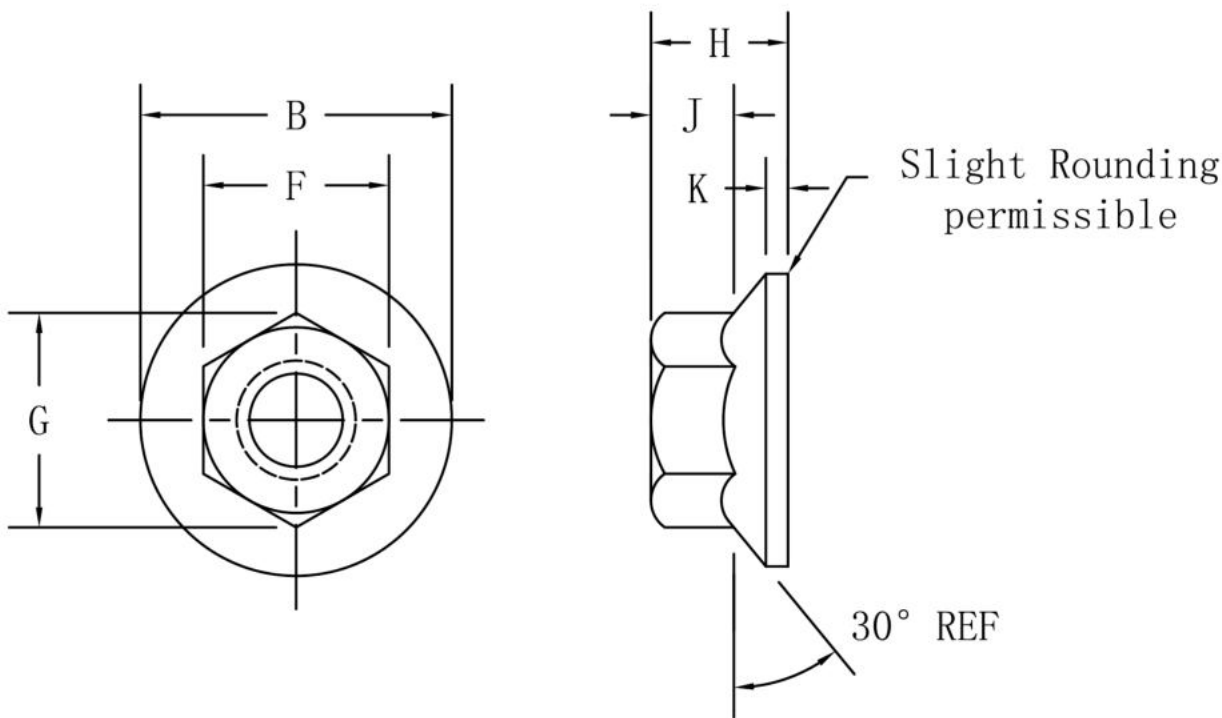


Hex Nuts and Hex Jam Nuts



Nominal Size or Basic Major Dia of Thread		F			G		H			H <sub>1</sub>			Runout of Bearing Face,FIM		
		Width Across Flats			Width Across Corners		Thickness Hex Nuts			Thickness Hex Jam Nuts			Hex Nuts		Hex Jam Nuts
													Specified Proof Load		
		Basic	Max	Min	Max	Min	Basic	Max	Min	Basic	Max	Min	Up to 150,000 psi	150,000 psi and Greater	All Strength Levels
													Max		
1/4	0.2500	7/16	0.438	0.428	0.505	0.488	7/32	0.226	0.212	5/32	0.163	0.150	0.015	0.010	0.015
5/16	0.3125	1/2	0.500	0.489	0.577	0.557	17/64	0.273	0.258	3/16	0.195	0.180	0.016	0.011	0.016
3/8	0.3750	9/16	0.562	0.551	0.650	0.628	21/64	0.337	0.320	7/32	0.227	0.210	0.017	0.012	0.017
7/16	0.4375	11/16	0.688	0.675	0.794	0.768	3/8	0.385	0.365	1/4	0.260	0.240	0.018	0.013	0.018
1/2	0.5000	3/4	0.750	0.736	0.866	0.840	7/16	0.448	0.427	5/16	0.323	0.302	0.019	0.014	0.019
9/16	0.5625	7/8	0.875	0.861	1.010	0.982	31/64	0.496	0.473	5/16	0.324	0.301	0.020	0.015	0.020
5/8	0.6250	15/16	0.938	0.922	1.083	1.051	35/64	0.559	0.535	3/8	0.387	0.363	0.021	0.016	0.021
3/4	0.7500	1-1/8	1.125	1.088	1.299	1.240	41/64	0.665	0.617	27/64	0.446	0.398	0.023	0.018	0.023
7/8	0.8750	1-5/16	1.312	1.269	1.516	1.447	3/4	0.776	0.724	31/64	0.510	0.458	0.025	0.020	0.025
1	1.0000	1-1/2	1.500	1.450	1.732	1.653	55/64	0.887	0.831	35/64	0.575	0.519	0.027	0.022	0.027
1-1/8	1.1250	1-11/16	1.688	1.631	1.949	1.859	31/32	0.999	0.939	39/64	0.639	0.579	0.030	0.025	0.030
1-1/4	1.2500	1-7/8	1.875	1.812	2.165	2.066	1-1/16	1.094	1.030	23/32	0.751	0.687	0.033	0.028	0.033
1-3/8	1.3750	2-1/16	2.062	1.994	2.382	2.273	1-11/64	1.206	1.138	25/32	0.815	0.747	0.036	0.031	0.036
1-1/2	1.5000	2-1/4	2.250	2.175	2.598	2.480	1-9/32	1.317	1.245	27/32	0.880	0.808	0.039	0.034	0.039
See Notes	9	3			4								2		

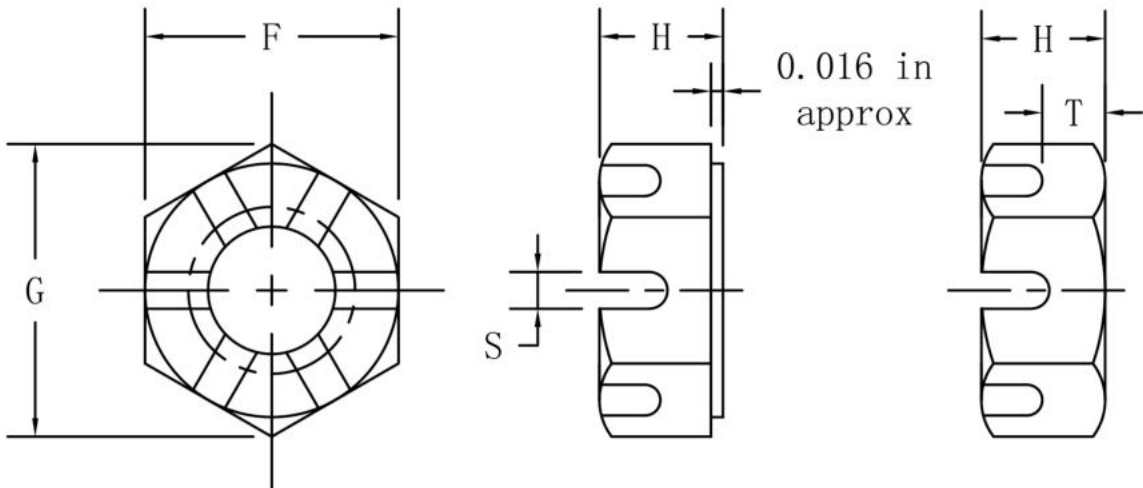
Hex Flange Nuts and Large Hex Flange Nuts



Nominal Size or Basic Major Dia of Thread		F		G		B		H		J	K	Angularity of Bearing Surface
		Width Across Flats		Width Across Corners		Flange Diameter		Nut Thickness		Wrench- ing Length	Flange Thick- ness	
Max	Min	Max	Min	Max	Min	Max	Min	Max	Min	Min	Min	Max
No.6	0.1380	0.312	0.302	0.361	0.342	0.422	0.406	0.171	0.156	0.10	0.02	0.014
8	0.1640	0.344	0.334	0.397	0.381	0.469	0.452	0.203	0.187	0.13	0.02	0.016
10	0.1900	0.375	0.365	0.433	0.416	0.500	0.480	0.219	0.203	0.13	0.03	0.017
12	0.2160	0.438	0.428	0.505	0.488	0.594	0.574	0.236	0.222	0.14	0.04	0.020
1/4	0.2500	0.438	0.428	0.505	0.488	0.594	0.574	0.236	0.222	0.14	0.04	0.020
5/16	0.3125	0.500	0.489	0.577	0.557	0.680	0.660	0.283	0.268	0.17	0.04	0.023
3/8	0.3750	0.562	0.551	0.650	0.628	0.750	0.728	0.347	0.330	0.23	0.04	0.025
7/16	0.4375	0.688	0.675	0.794	0.768	0.937	0.910	0.395	0.375	0.26	0.04	0.032
1/2	0.5000	0.750	0.736	0.866	0.840	1.031	1.000	0.458	0.437	0.31	0.05	0.035
9/16	0.5625	0.875	0.861	1.010	0.982	1.188	1.155	0.506	0.483	0.35	0.05	0.040
5/8	0.6250	0.938	0.922	1.083	1.051	1.281	1.248	0.569	0.545	0.40	0.05	0.044
3/4	0.7500	1.125	1.088	1.299	1.240	1.500	1.460	0.675	0.627	0.46	0.06	0.051



Heavy Hex Slotted Nuts



Nominal Size or Basic Major Dia of Thread		F			G		H			T		S		Runout of Bearing Surface FIM
		Width Across Flats			Width Across Corners		Thickness			Unslotted Thickness		Width of Slot		
		Basic	Max	Min	Max	Min	Basic	Max	Min	Max	Min	Max	Min	
1/4	0.2500	1/2	0.500	0.488	0.577	0.556	15/64	0.250	0.218	0.15	0.13	0.10	0.07	0.017
5/16	0.3125	9/16	0.562	0.546	0.650	0.622	19/64	0.314	0.280	0.21	0.19	0.12	0.09	0.020
3/8	0.3750	11/16	0.688	0.669	0.794	0.763	23/64	0.377	0.341	0.24	0.22	0.15	0.12	0.021
7/16	0.4375	3/4	0.750	0.728	0.866	0.830	27/64	0.441	0.403	0.28	0.26	0.15	0.12	0.022
1/2	0.5000	7/8	0.875	0.850	1.010	0.969	31/64	0.504	0.464	0.34	0.32	0.18	0.15	0.023
9/16	0.5625	15/16	0.938	0.909	1.083	1.037	35/64	0.568	0.526	0.37	0.35	0.18	0.15	0.024
5/8	0.6250	1-1/16	1.062	1.031	1.227	1.175	39/64	0.631	0.587	0.40	0.38	0.24	0.18	0.025
3/4	0.7500	1-1/4	1.250	1.212	1.443	1.382	47/64	0.758	0.710	0.49	0.47	0.24	0.18	0.027
7/8	0.8750	1-7/16	1.438	1.394	1.660	1.589	55/64	0.885	0.833	0.62	0.59	0.24	0.18	0.029
1	1.0000	1-5/8	1.625	1.575	1.876	1.796	63/64	1.012	0.956	0.72	0.69	0.30	0.24	0.031
1-1/8	1.1250	1-13/16	1.812	1.756	2.093	2.002	1-7/64	1.139	1.079	0.78	0.75	0.33	0.24	0.033
1-1/4	1.2500	2	2.000	1.938	2.309	2.209	1-7/32	1.251	1.187	0.86	0.83	0.40	0.31	0.035
1-3/8	1.3750	2-3/16	2.188	2.119	2.526	2.416	1-11/32	1.378	1.310	0.99	0.95	0.40	0.31	0.038
1-1/2	1.5000	2-3/8	2.375	2.300	2.742	2.622	1-15/32	1.505	1.433	1.05	1.01	0.46	0.37	0.041
1-3/4	1.7500	2-3/4	2.750	2.662	3.175	3.035	1-23/32	1.759	1.679	1.24	1.20	0.52	0.43	0.048
2	2.0000	3-1/8	3.125	3.025	3.608	3.449	1-31/32	2.013	1.925	1.43	1.38	0.52	0.43	0.055
2-1/4	2.2500	3-1/2	3.500	3.388	4.041	3.862	2-13/64	2.251	2.155	1.67	1.62	0.52	0.43	0.061
2-1/2	2.5000	3-7/8	3.875	3.750	4.474	4.275	2-29/64	2.505	2.401	1.79	1.74	0.64	0.55	0.068
2-3/4	2.7500	4-1/4	4.250	4.112	4.907	4.688	2-45/64	2.759	2.647	2.05	1.99	0.64	0.55	0.074
3	3.0000	4-5/8	4.625	4.475	5.340	5.102	2-61/64	3.013	2.893	2.23	2.17	0.71	0.62	0.081
3-1/4	3.2500	5	5.000	4.838	5.774	5.515	3-3/16	3.252	3.124	2.47	2.41	0.71	0.62	0.087
3-1/2	3.5000	5-3/8	5.375	5.200	6.207	5.928	3-7/16	3.506	3.370	2.72	2.65	0.71	0.62	0.094
3-3/4	3.7500	5-3/4	5.750	5.562	6.640	6.341	3-11/16	3.760	3.616	2.97	2.90	0.71	0.62	0.100
4	4.0000	6-1/8	6.125	5.925	7.073	6.755	3-15/16	4.014	3.862	3.22	3.15	0.71	0.62	0.107
See Notes	10	3			4					7		7		2

Spring Nuts

Without spring

Part Number	Size	Part No.	Size	Packing pac/box
1006	M6	1014	1/4	100
1008	M8	1516	5/16	100
1010	M10	1038	3/8	100
1012	M12	1112	1/2	100
1016	M16	1058	5/8	50

Short spring

Part Number	Size	Part No.	Size	Packing pac/box
2006	M6	2014	1/4	100
2008	M8	2516	5/16	100
2010	M10	2038	3/8	100
2012	M12	2112	1/2	100

Top spring

Part Number	Size	Part No.	Size	Packing pac/box
3006	M6	3014	1/4	100
3008	M8	3516	5/16	100
3010	M10	3038	3/8	100
3012	M12	3112	1/2	100

Long spring

Part Number	Size	Part No.	Size	Packing pac/box
4006	M6	4014	1/4	100
4008	M8	4516	5/16	100
4010	M10	4038	3/8	100
4012	M12	4112	1/2	100
4016	M16	4058	5/8	50

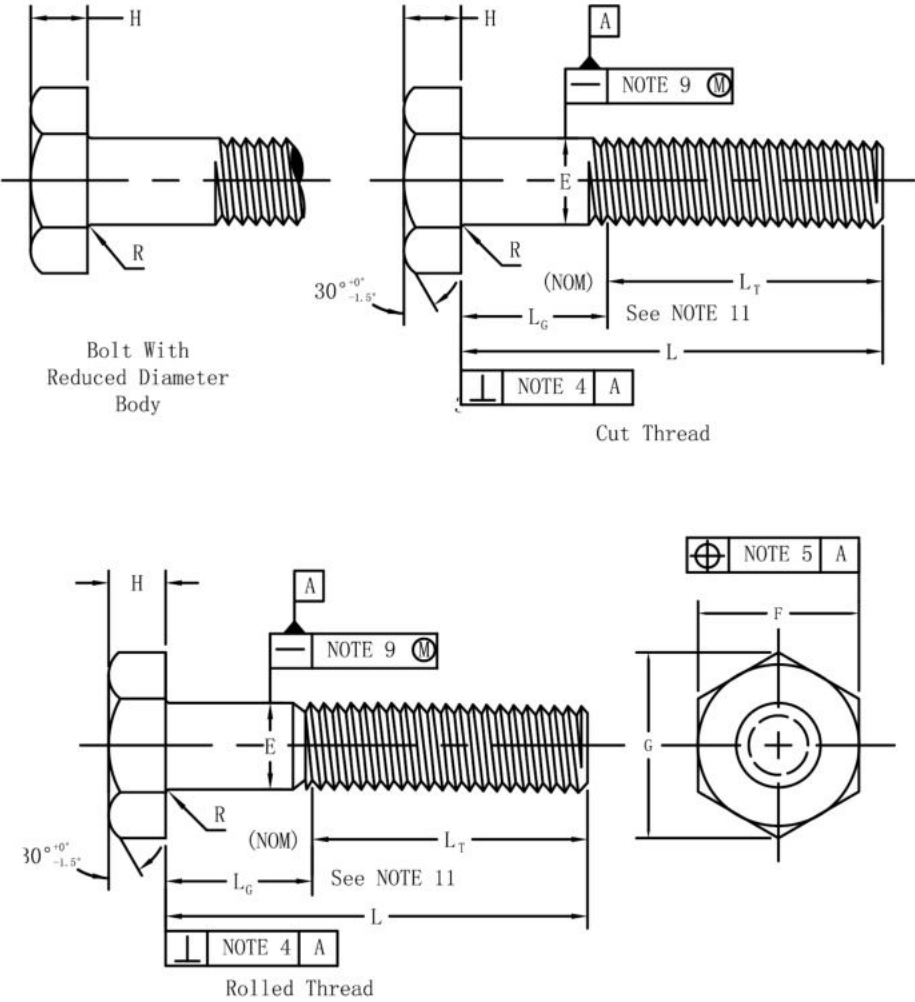
Regular spring

Part Number	Size	Part No.	Size	Packing pac/box
5006	M6	5014	1/4	100
5008	M8	5516	5/16	100
5010	M10	5038	3/8	100
5012	M12	5112	1/2	100
5016	M16	5058	5/8	50

Faster fitting

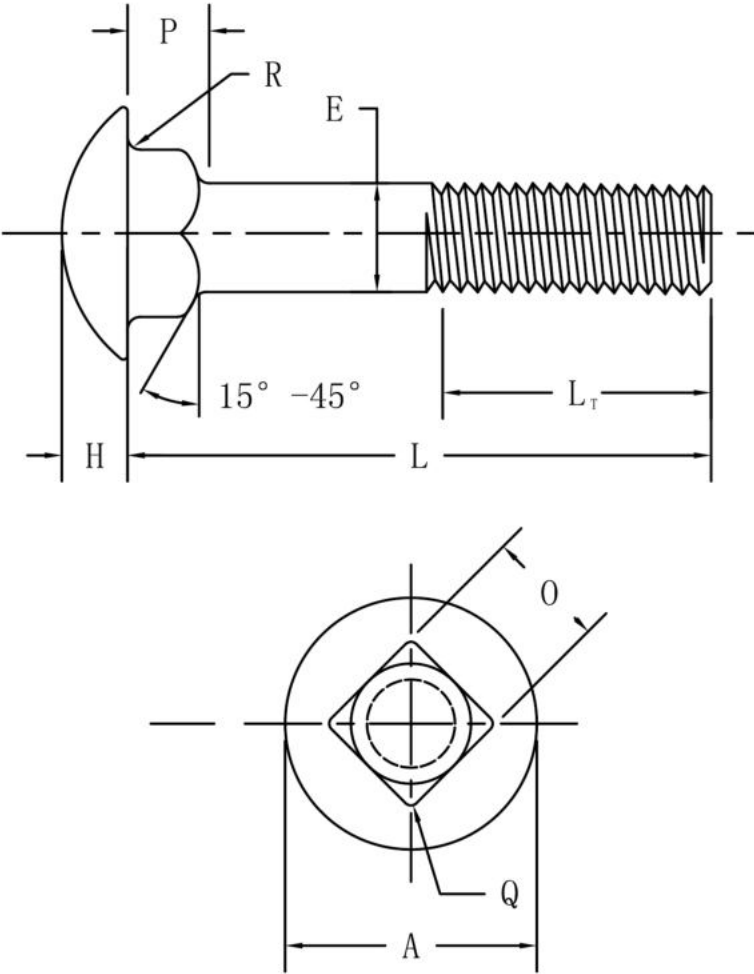
Part Number	Size	Part No.	Size	Packing pac/box
6008	M8	6516	5/16	100
6010	M10	6038	3/8	100
6012	M12	6112	1/2	100

Hex Bolts



Nominal Size or Basic Product Diameter		E		F			G		H			R		L <sub>T</sub>	
		Full-Size Body Diameter		Width Across Flats			Width Across Corners		Head Height			Radius of Fillet		Thread Length for Bolt Lengths	
		Max	Min	Basic	Max	Min	Max	Min	Basic	Max	Min	Max	Min	6 in. and Shorter	Over 6 in.
1/4	0.2500	0.260	0.237	7/16	0.438	0.425	0.505	0.484	11/64	0.188	0.150	0.03	0.01	0.750	1.000
5/16	0.3125	0.324	0.298	1/2	0.500	0.484	0.577	0.552	7/32	0.235	0.195	0.03	0.01	0.875	1.125
3/8	0.3750	0.388	0.360	9/16	0.562	0.544	0.650	0.620	1/4	0.268	0.226	0.03	0.01	1.000	1.250
7/16	0.4375	0.452	0.421	5/8	0.625	0.603	0.722	0.687	19/64	0.316	0.272	0.03	0.01	1.125	1.375
1/2	0.5000	0.515	0.482	3/4	0.750	0.725	0.866	0.826	11/32	0.364	0.302	0.03	0.01	1.250	1.500
5/8	0.6250	0.642	0.605	15/16	0.938	0.906	1.083	1.033	27/64	0.444	0.378	0.06	0.02	1.500	1.750
3/4	0.7500	0.768	0.729	1-1/8	1.125	1.088	1.299	1.240	1/2	0.524	0.455	0.06	0.02	1.750	2.000
7/8	0.8750	0.895	0.852	1-5/16	1.312	1.269	1.516	1.447	37/64	0.604	0.531	0.06	0.02	2.000	2.250
1	1.0000	1.022	0.976	1-1/2	1.500	1.450	1.732	1.653	43/64	0.700	0.591	0.09	0.03	2.250	2.500
1-1/8	1.1250	1.149	1.098	1-11/16	1.688	1.631	1.949	1.859	3/4	0.780	0.658	0.09	0.03	2.500	2.750

Round Head Square Neck Bolts

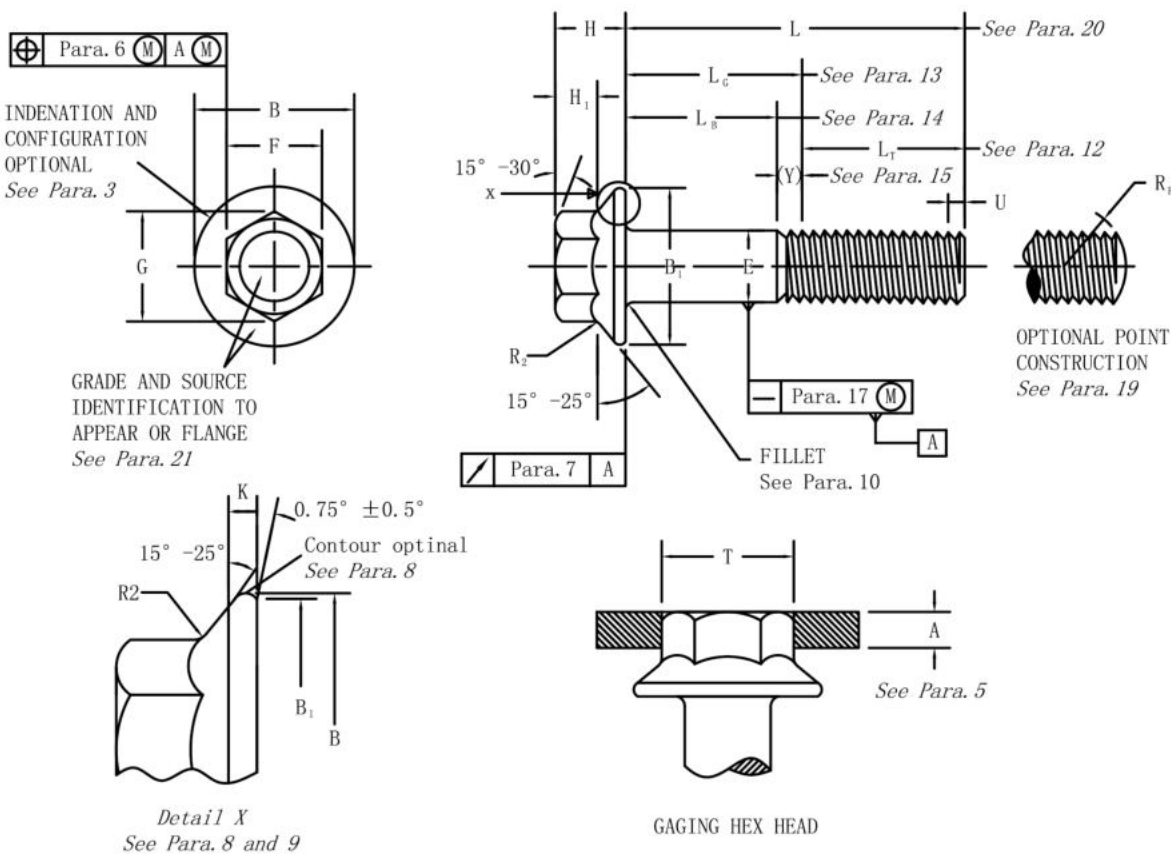


Nominal Size or Basic Bolt Diameter		E		A		H		O		P		Q	R
		Body Diameter		Head Diameter		Head Height		Square Width		Square Depth		Corner Radius on Square	Fillet Radius
		Max	Min	Max	Min	Max	Min	Max	Min	Max	Min	Max	Max
No.10	0.1900	0.199	0.182	0.469	0.436	0.144	0.094	0.199	0.185	0.125	0.094	0.031	0.031
1/4	0.2500	0.260	0.237	0.594	0.563	0.145	0.125	0.260	0.245	0.156	0.125	0.031	0.031
5/16	0.3125	0.324	0.298	0.719	0.688	0.176	0.158	0.324	0.307	0.187	0.156	0.031	0.031
3/8	0.3750	0.388	0.360	0.844	0.782	0.208	0.188	0.388	0.368	0.219	0.188	0.047	0.031
7/16	0.4375	0.452	0.421	0.969	0.907	0.239	0.219	0.452	0.431	0.250	0.219	0.047	0.031
1/2	0.5000	0.515	0.483	1.094	1.032	0.270	0.250	0.515	0.492	0.281	0.250	0.047	0.031
5/8	0.6250	0.642	0.605	1.344	1.219	0.344	0.313	0.642	0.616	0.344	0.313	0.078	0.062
3/4	0.7500	0.768	0.729	1.594	1.469	0.406	0.375	0.768	0.741	0.406	0.375	0.078	0.062
7/8	0.8750	0.895	0.852	1.844	1.719	0.459	0.438	0.895	0.865	0.469	0.438	0.094	0.062
1	1.0000	1.022	0.976	2.094	1.969	0.531	0.500	1.022	0.990	0.531	0.500	0.094	0.062
See Notes 1,3		4		5		6		7		7			2,8

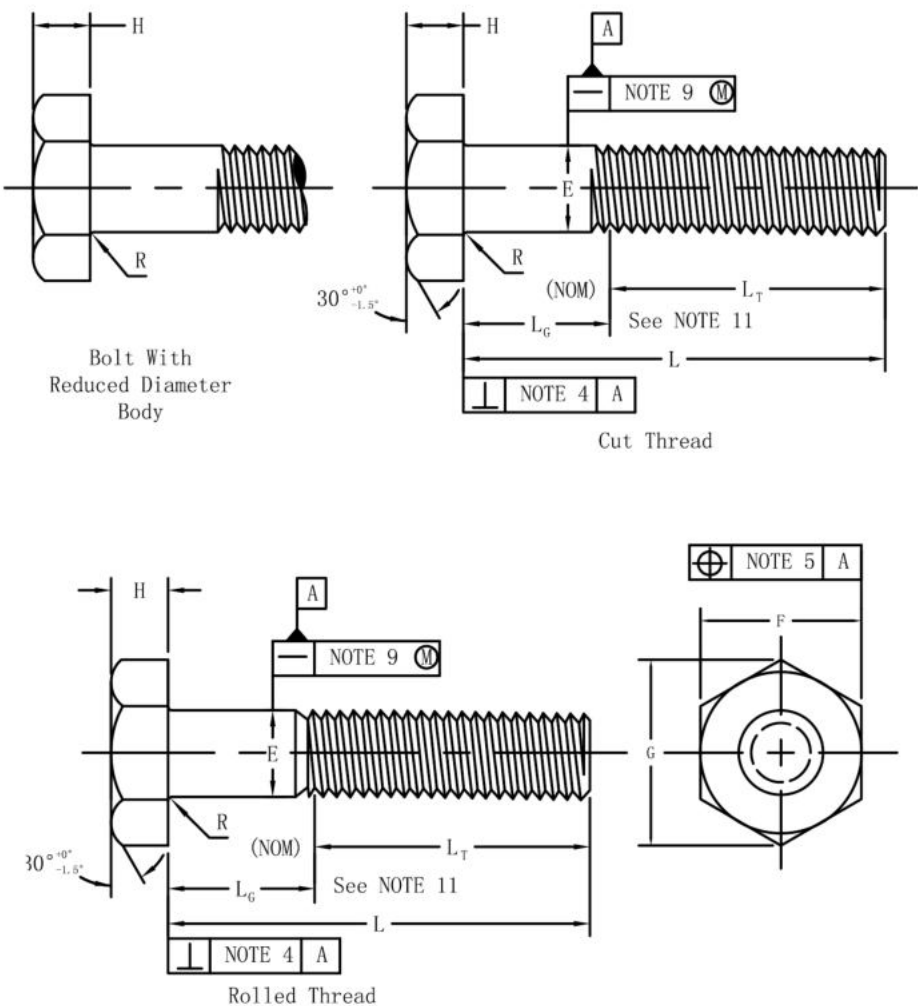




## Hex Flange Screws



## Heavy Hex Bolts



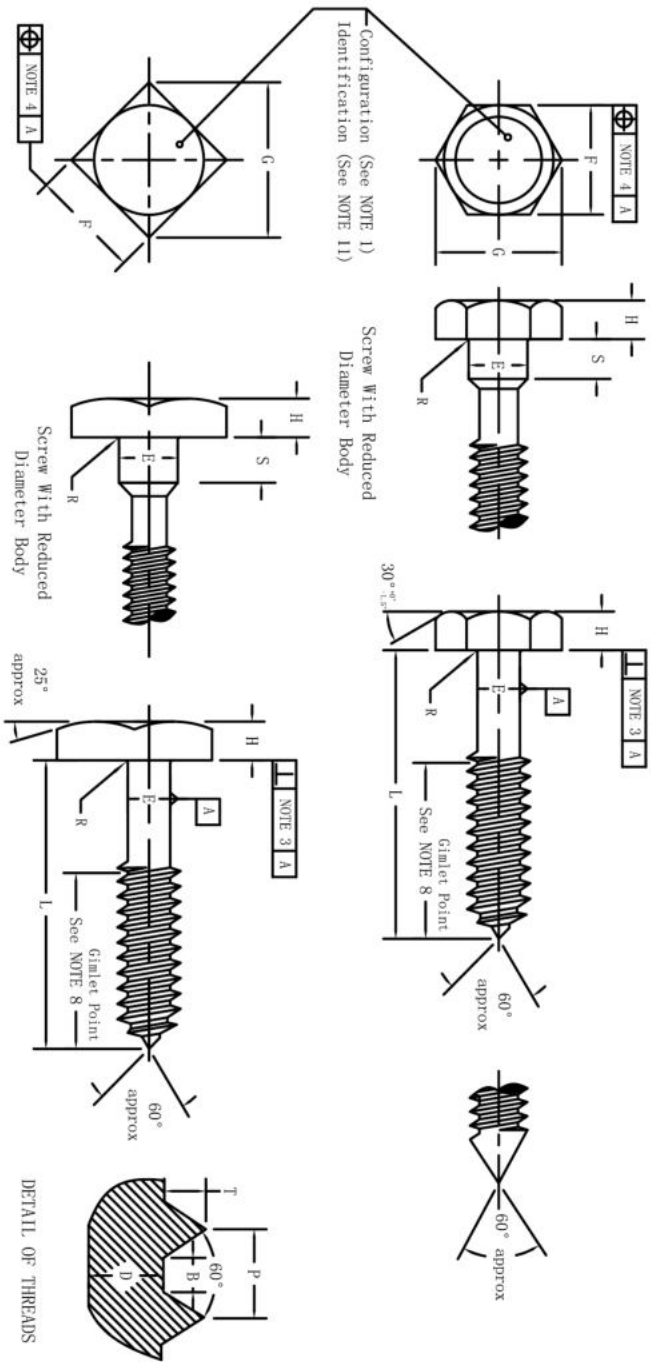
Nominal Size or Basic Major Dia of Thread		E		F			G		B	K	H	H <sub>1</sub>	R <sub>2</sub>	A	
		Body Dia		Width Across Flats			Width Across Corners		Flange Dia	Flange Thick- ness	Head Height	Hex Height	Flange Top Radius	Gaging Ring Thickness	
		Max	Min	Basic	Max	Min	Max	Min	Max	Min	Max	Min	Max	Max	Min
1/4	0.2500	0.2500	0.2450	3/8	0.3750	0.367	0.433	0.409	0.56	0.04	0.28	0.17	0.015	0.0514	0.0511
5/16	0.3125	0.3125	0.3065	1/2	0.5000	0.489	0.577	0.548	0.68	0.05	0.32	0.21	0.019	0.0643	0.0640
3/8	0.3750	0.3750	0.3690	9/16	0.5625	0.551	0.650	0.618	0.81	0.06	0.39	0.25	0.022	0.0771	0.0768
7/16	0.4375	0.4375	0.4305	5/8	0.6250	0.612	0.722	0.685	0.93	0.07	0.46	0.30	0.026	0.0900	0.0897
1/2	0.5000	0.5000	0.4930	3/4	0.7500	0.736	0.866	0.825	1.07	0.08	0.51	0.34	0.030	0.1029	0.1026
9/16	0.5625	0.5625	0.5545	13/16	0.8125	0.798	0.938	0.895	1.19	0.09	0.57	0.38	0.034	0.1157	0.1154
5/8	0.6250	0.6250	0.6170	15/16	0.9375	0.922	1.083	1.034	1.33	0.10	0.62	0.42	0.038	0.1286	0.1283
3/4	0.7500	0.7500	0.7410	1-1/8	1.1250	1.100	1.299	1.234	1.59	0.11	0.73	0.51	0.045	0.1543	0.1540
See Para	23	18					5		8		4		8	5	

Nominal Size or Basic Product Diameter		E		F			G		H			R		L <sub>T</sub>	
		Full-Size Body Diameter		Width Across Flats			Width Across Corners		Head Height			Radius of Fillet		Thread Length for Bolt Lengths	
														6 in. and Shorter	Over 6 in.
		Max	Min	Basic	Max	Min	Max	Min	Basic	Max	Min	Max	Min	Nom	Nom
1/2	0.5000	0.515	0.482	7/8	0.875	0.850	1.010	0.969	11/32	0.364	0.302	0.03	0.01	1.250	1.500
5/8	0.6250	0.642	0.605	11/16	1.062	1.031	1.227	1.175	27/64	0.444	0.378	0.06	0.02	1.500	1.750
3/4	0.7500	0.768	0.729	1-1/4	1.250	1.212	1.443	1.383	1/2	0.524	0.455	0.06	0.02	1.750	2.000
7/8	0.8750	0.895	0.852	1-7/16	1.438	1.394	1.660	1.589	37/64	0.604	0.531	0.06	0.02	2.000	2.250
1	1.0000	1.022	0.976	1-5/8	1.625	1.575	1.876	1.796	43/64	0.700	0.591	0.09	0.03	2.250	2.500
1-1/8	1.1250	1.149	1.098	1-13/16	1.812	1.756	2.093	2.002	3/4	0.780	0.658	0.09	0.03	2.500	2.750





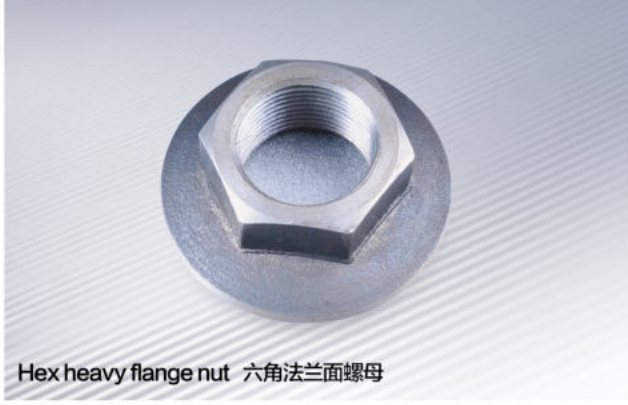
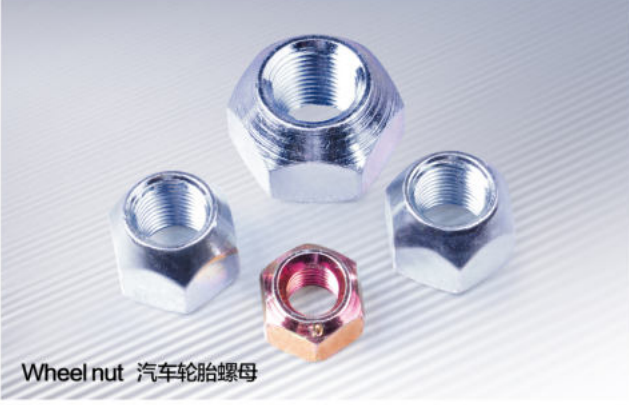
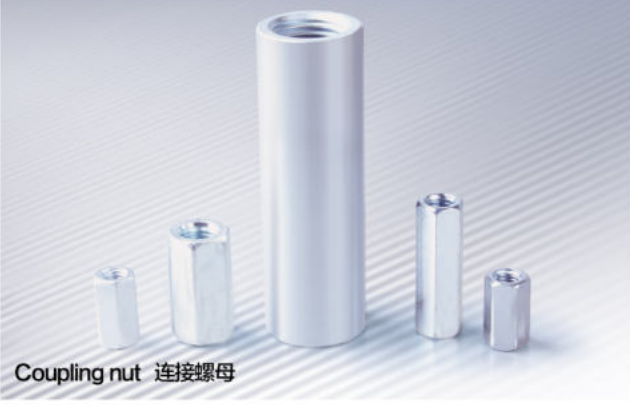
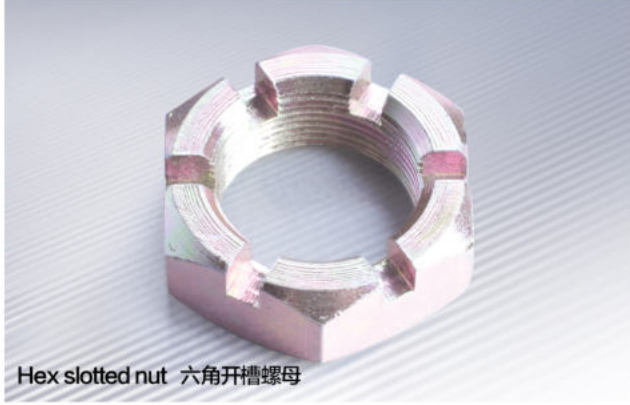
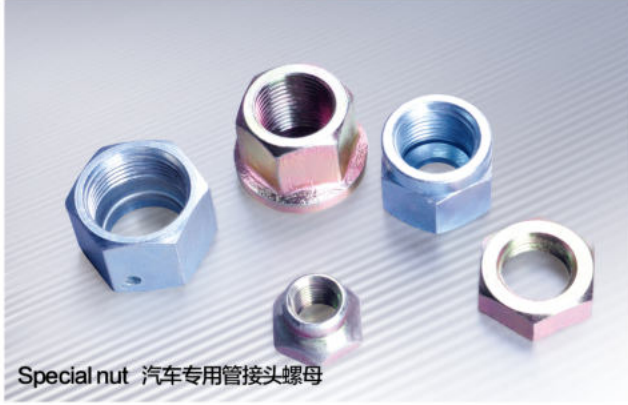
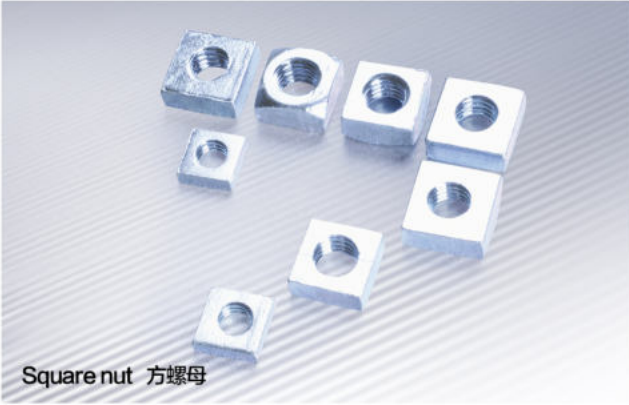
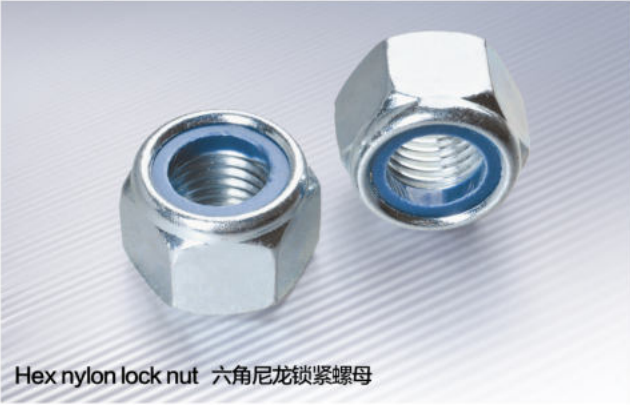
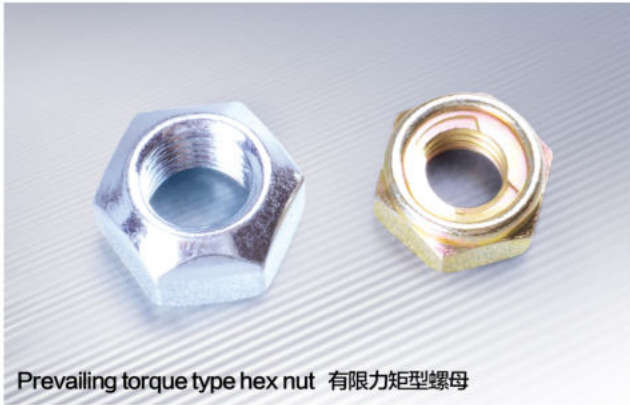
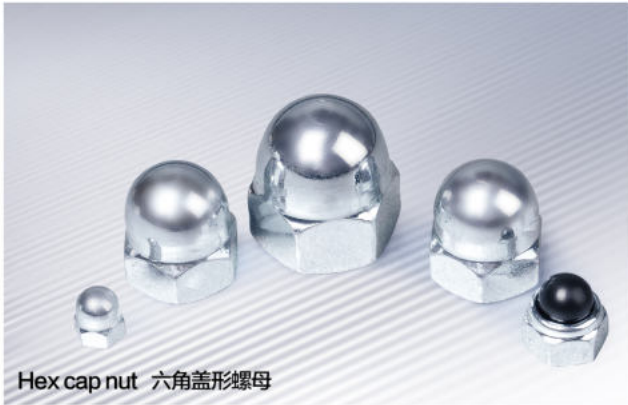
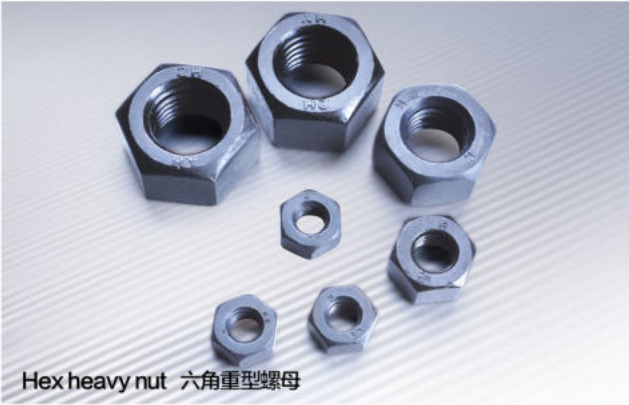
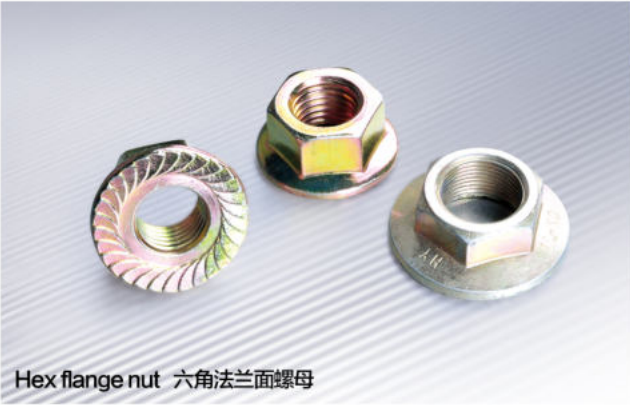
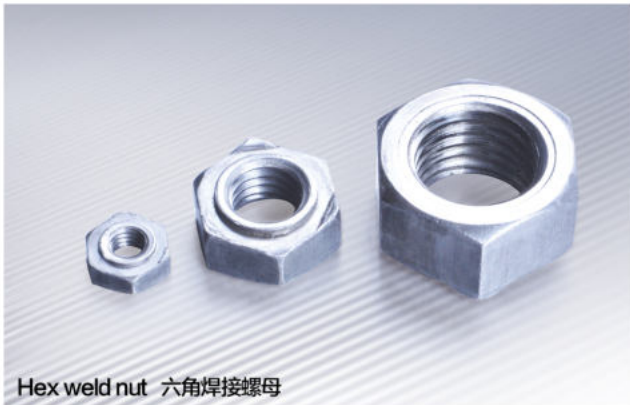
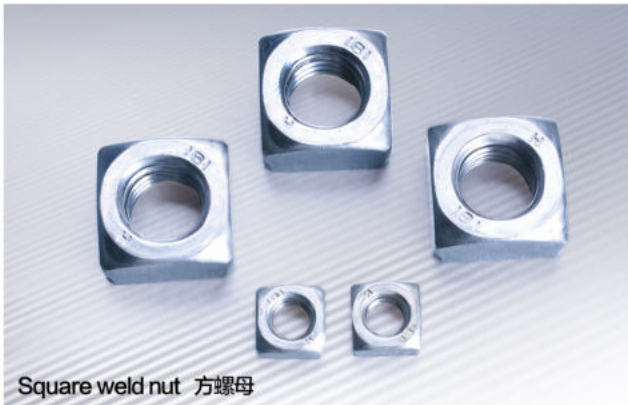
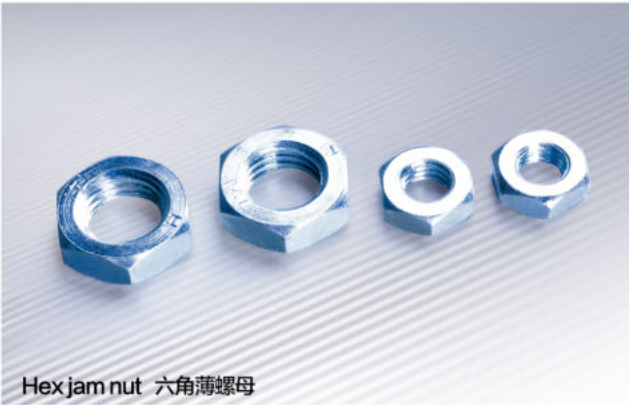
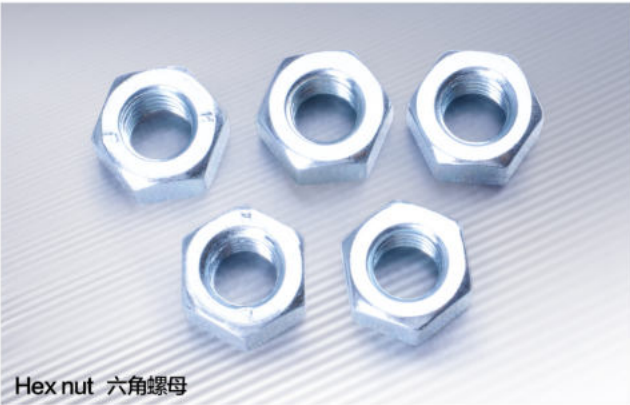
## Square and Hex Lag Screws



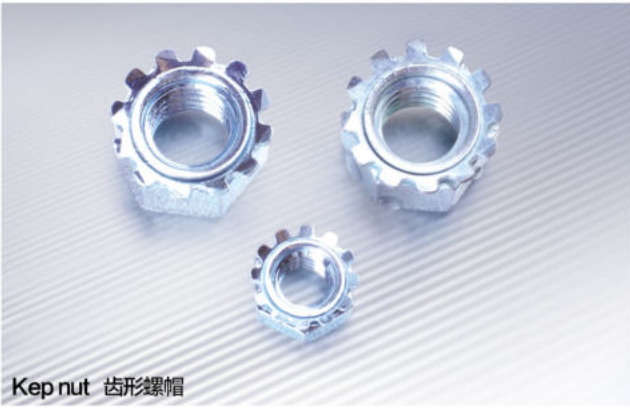
Nominal Size or Basic Product Dia	E		F		G		H		G		H		S	R		Threads per Inch	Thread Dimensions							
	Body or Shoulder Dia	Width Across Flats	Square Lag Screws				Hex Lag Screws				Shoulder Length	Radius of Fillet	Pitch											
			Width Across Corners	Height	Width Across Corners	Height	Flat at Root	Depth of Thread	Root Dia															
No. 10	0.1900	0.199	0.178	9/32	0.281	0.271	0.398	0.372	1/8	0.140	0.110	0.323	0.309	1/8	0.140	0.110	0.094	0.03	0.01	11	0.091	0.039	0.035	0.120
*1/4	0.2500	0.260	0.237	3/8	0.375	0.362	0.530	0.498	11/64	0.188	0.156	-	-	-	-	-	0.094	0.03	0.01	10	0.100	0.043	0.039	0.173
**1/4	0.2500	0.260	0.237	7/16	0.438	0.425	-	-	-	-	-	0.505	0.484	11/64	0.188	0.150	0.094	0.03	0.01	10	0.100	0.043	0.039	0.173
5/16	0.3125	0.324	0.298	1/2	0.500	0.484	0.707	0.665	13/64	0.220	0.186	0.577	0.552	7/32	0.235	0.195	0.125	0.03	0.01	9	0.111	0.048	0.043	0.227
3/8	0.3750	0.338	0.360	9/16	0.562	0.544	0.795	0.747	1/4	0.268	0.232	0.650	0.620	1/4	0.268	0.226	0.125	0.03	0.01	7	0.143	0.062	0.055	0.265
7/16	0.4375	0.452	0.421	5/8	0.625	0.603	0.884	0.828	19/64	0.316	0.278	0.772	0.687	19/64	0.316	0.272	0.156	0.03	0.01	7	0.143	0.062	0.055	0.328
1/2	0.5000	0.515	0.482	3/4	0.750	0.725	1.061	0.995	21/64	0.348	0.308	0.866	0.826	11/32	0.364	0.302	0.156	0.03	0.01	6	0.167	0.072	0.064	0.371
5/8	0.6250	0.642	0.605	15/16	0.938	0.906	1.326	1.244	27/64	0.444	0.400	1.083	1.033	27/64	0.444	0.378	0.312	0.06	0.02	5	0.200	0.086	0.077	0.471
3/4	0.7500	0.768	0.729	1-1/8	1.125	1.088	1.591	1.494	1/2	0.524	0.476	1.299	1.240	1/2	0.524	0.455	0.375	0.06	0.02	4-1/2	0.222	0.096	0.085	0.579
7/8	0.8750	0.895	0.852	1-5/16	1.312	1.269	1.856	1.742	19/32	0.620	0.568	1.516	1.447	37/64	0.604	0.531	0.375	0.06	0.02	4	0.250	0.106	0.096	0.683
1	1.0000	1.022	0.976	1-1/2	1.500	1.450	2.121	1.991	21/32	0.684	0.628	1.732	1.653	43/64	0.700	0.591	0.625	0.09	0.03	3-1/2	0.286	0.123	0.110	0.780
See Notes	12	5, 6	2										6									9, 13		



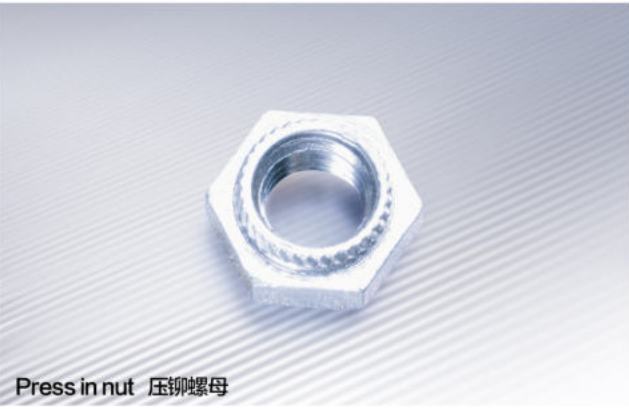
Nut Series 螺母系列



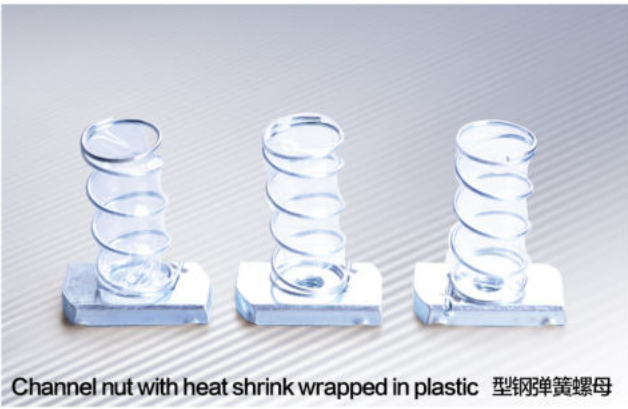




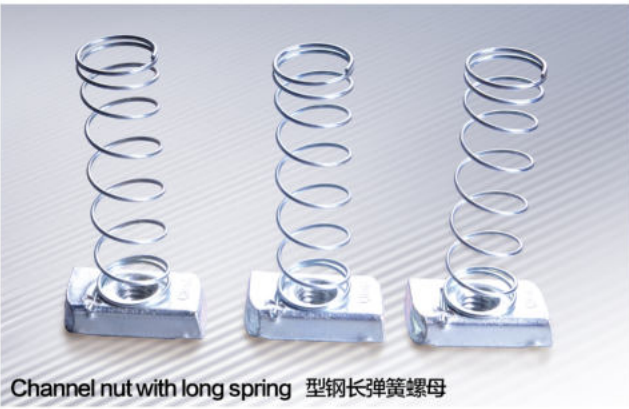
Kep nut 齿形螺母



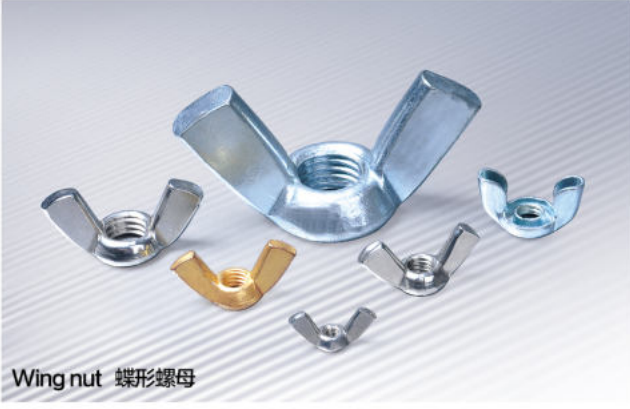
Press in nut 压铆螺母



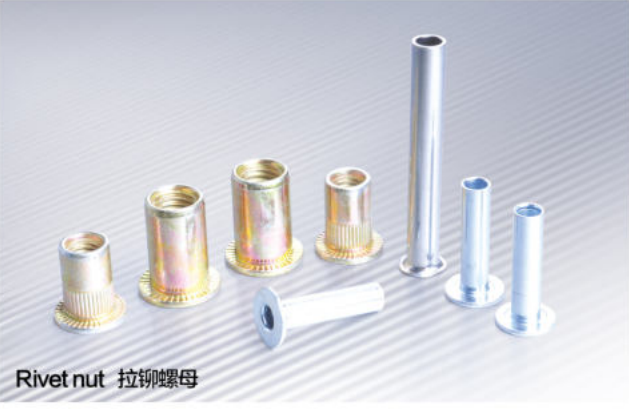
Channel nut with heat shrink wrapped in plastic 型钢弹簧螺母



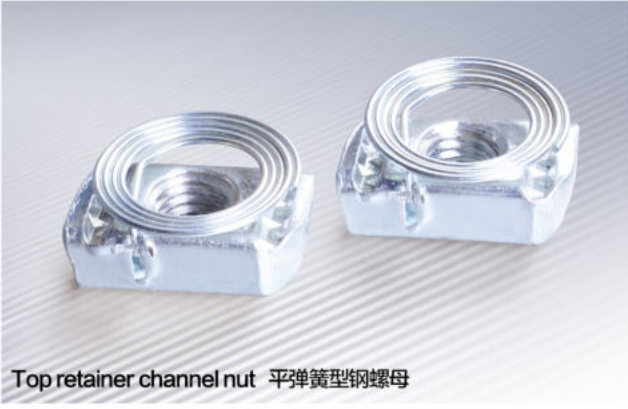
Channel nut with long spring 型钢长弹簧螺母



Wing nut 蝶形螺母



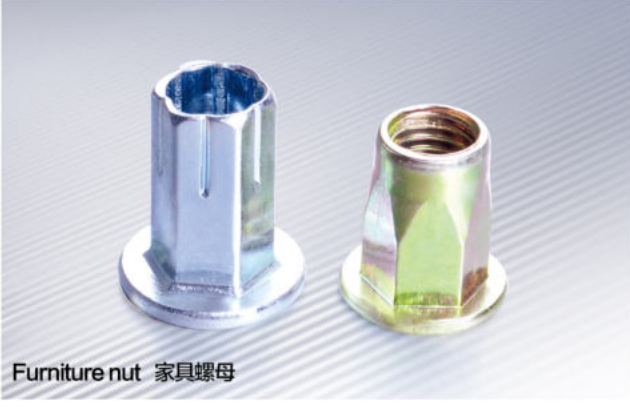
Rivet nut 拉铆螺母



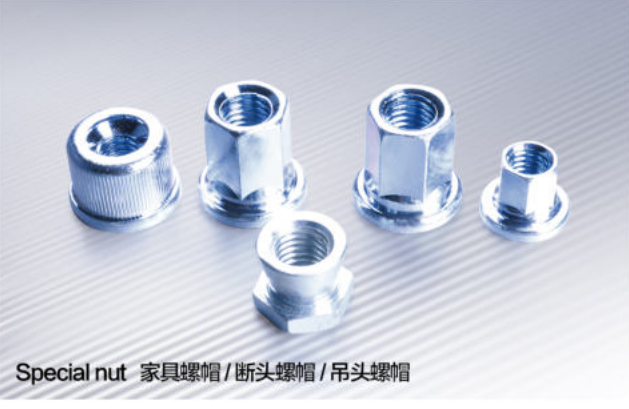
Top retainer channel nut 平弹簧型钢螺母



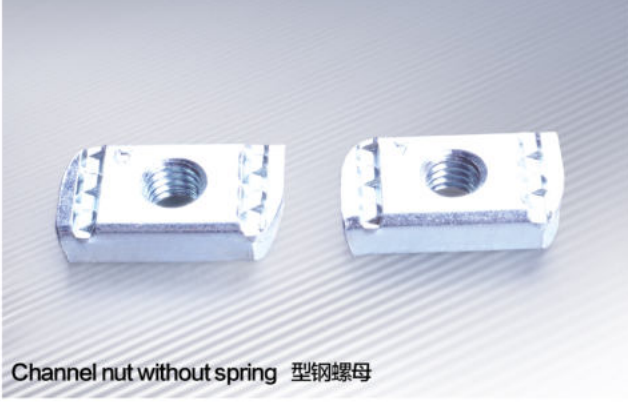
Channel nut with short spring 型钢短弹簧螺母



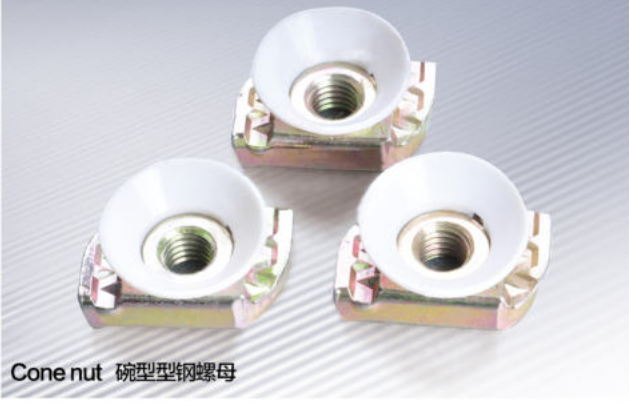
Furniture nut 家具螺母



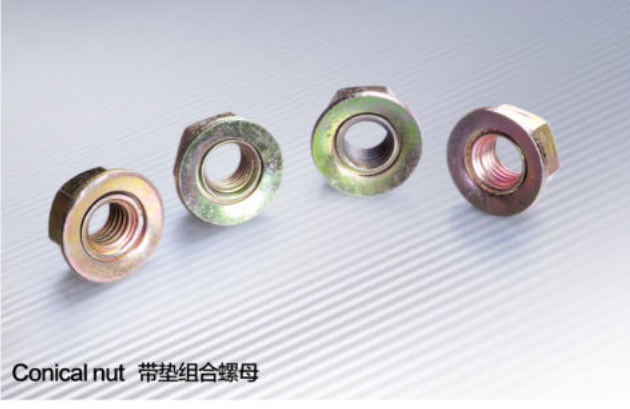
Special nut 家具螺母 / 断头螺母 / 吊头螺母



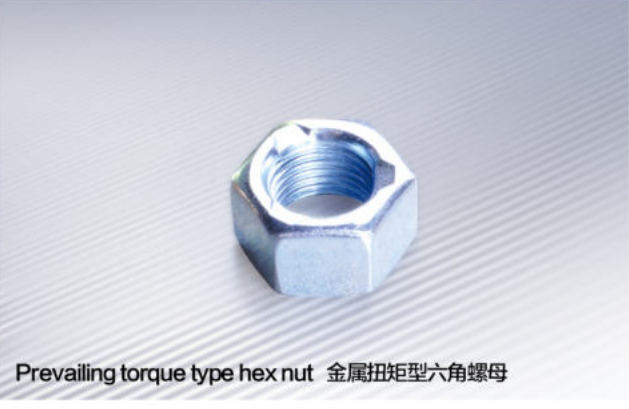
Channel nut without spring 型钢螺母



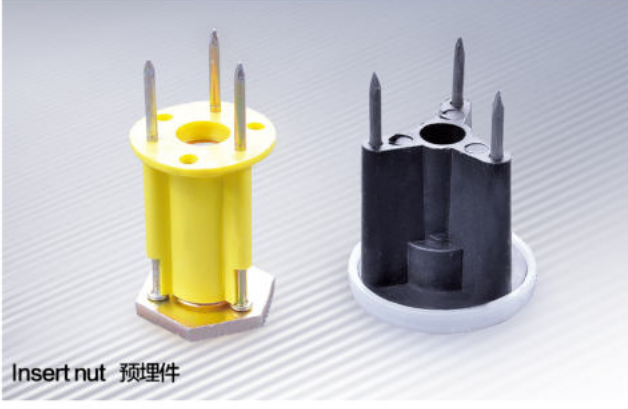
Cone nut 碗型钢螺母



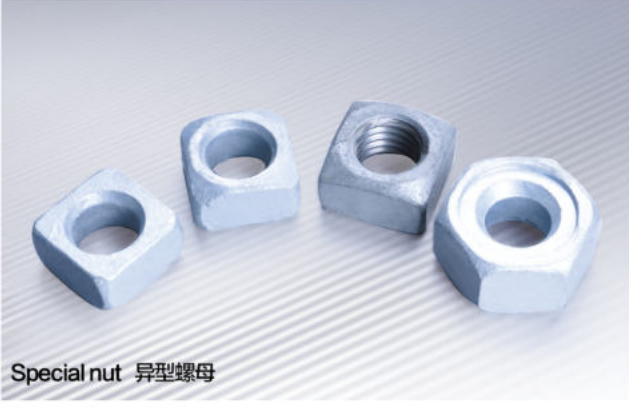
Conical nut 带垫组合螺母



Prevailing torque type hex nut 金属扭矩型六角螺母



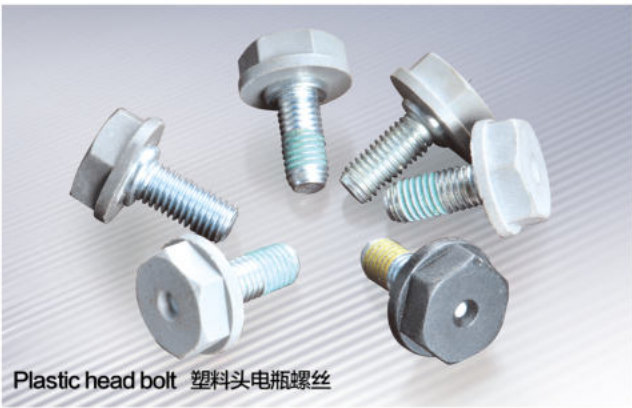
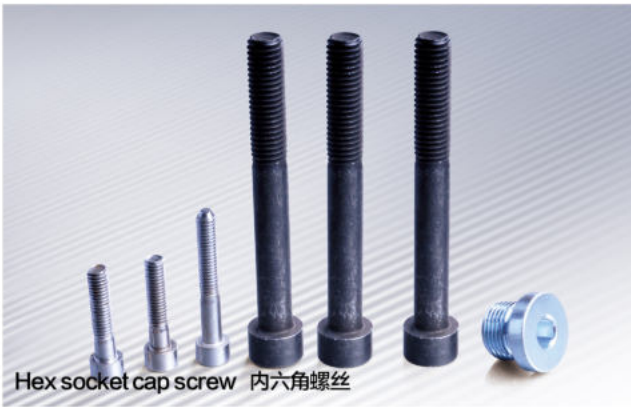
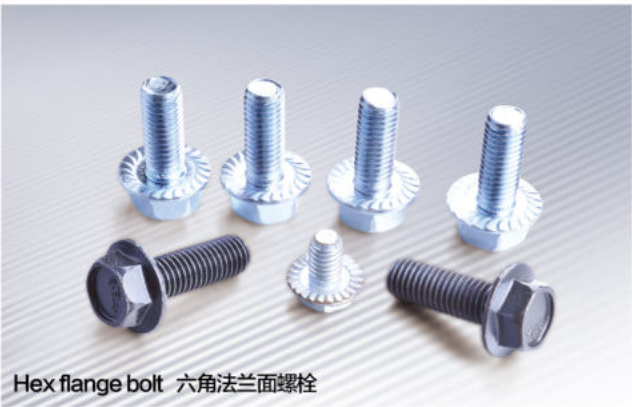
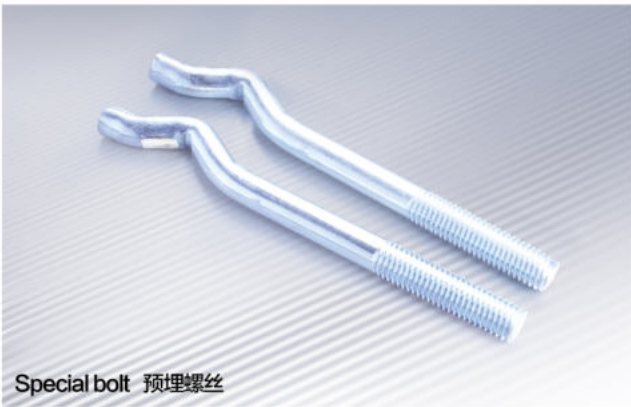
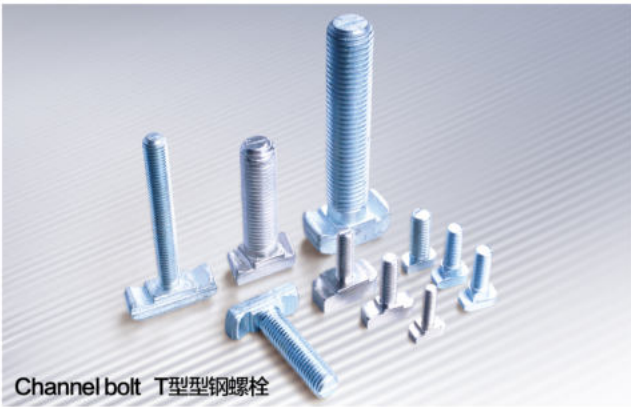
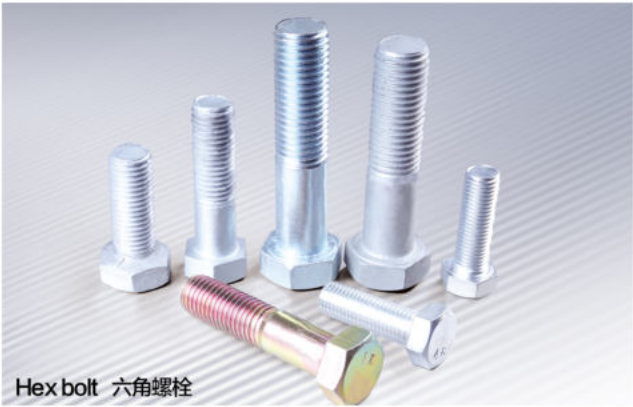
Insert nut 预埋件



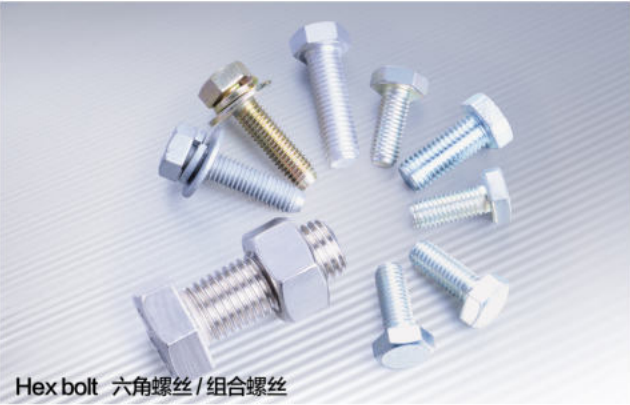
Special nut 异型螺母



Bolt Series 螺栓系列







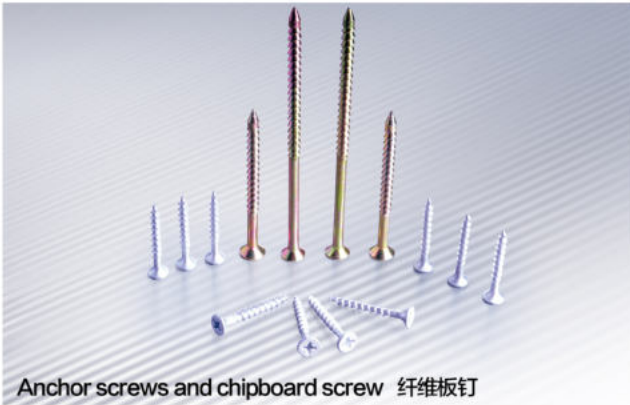
Hex bolt 六角螺丝 / 组合螺丝



Hex heavy bolt with nut 六角重型螺帽与螺栓



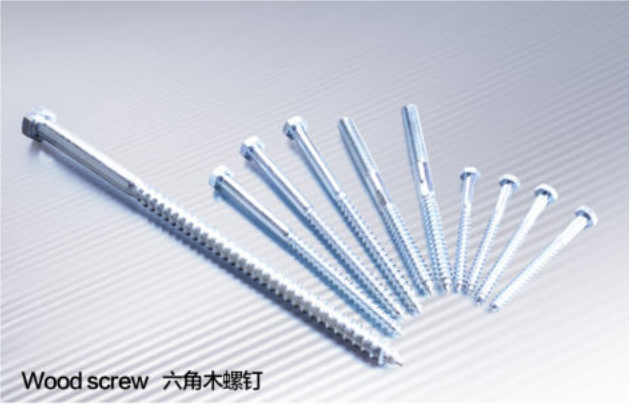
Pin 铆钉



Anchor screws and chipboard screw 纤维板钉



Self tapping screw 自攻螺钉



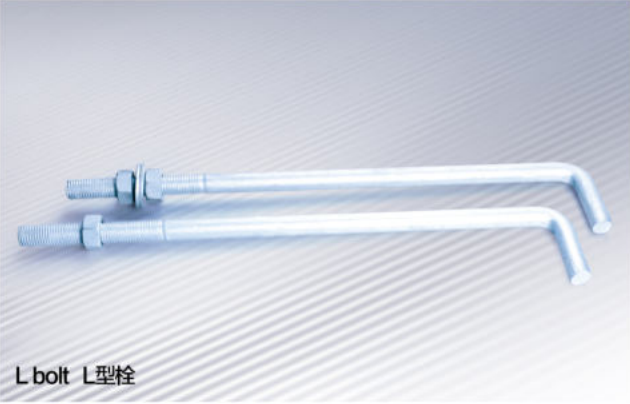
Wood screw 六角木螺钉



Colorful hook 灯钩



Brass toilet bolt set 黄铜水暖螺丝



L bolt L型栓



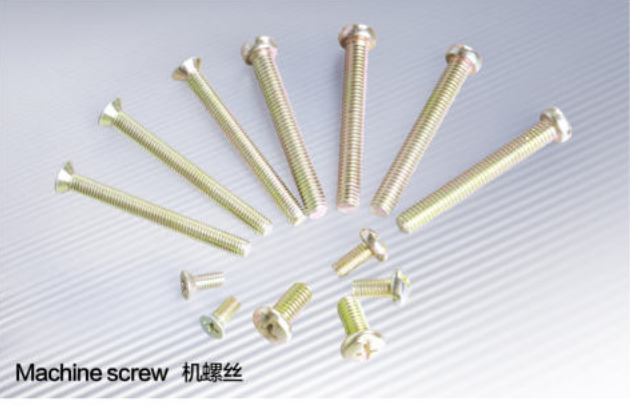
Hex washer self-drilling screw 自钻螺丝



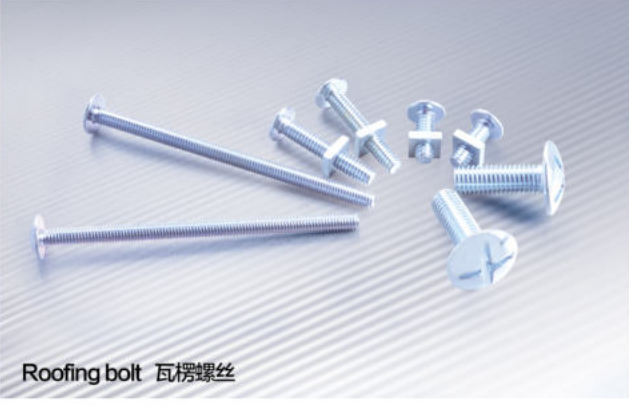
Special bolt 家具螺丝



Pig's tail screw 猪尾巴螺丝



Machine screw 机螺丝



Roofing bolt 瓦楞螺丝

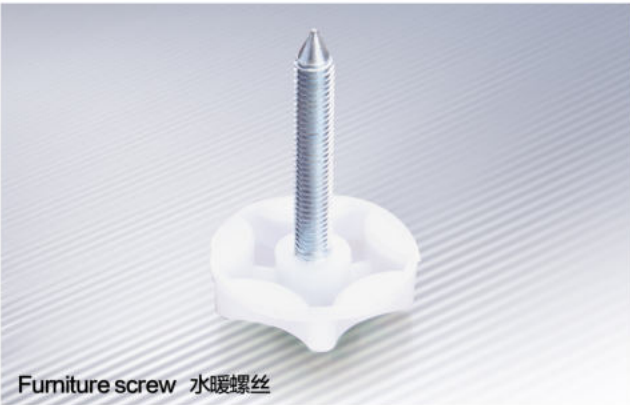


Special screw 家具螺钉



Chemical anchors stud 化学锚螺栓





Furniture screw 水暖螺丝



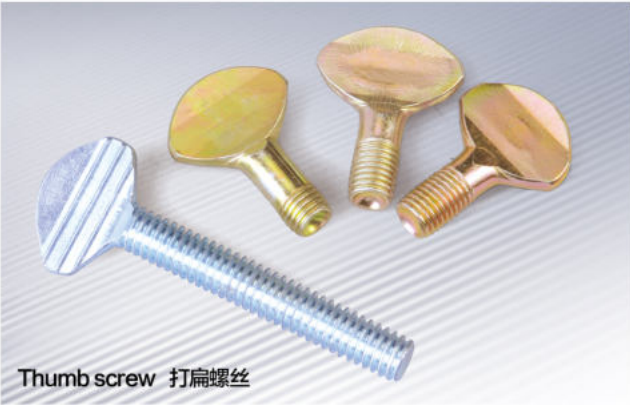
Hex bolt with washer 六角组合螺丝



Connective bolt 家具连接螺钉



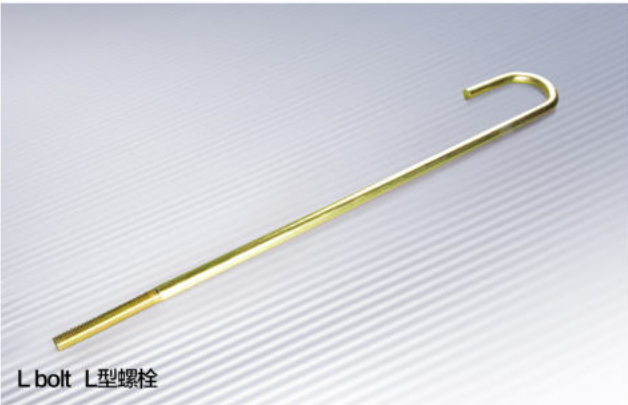
Grout anchored deformed bar 螺纹钢顶爆拉杆



Thumb screw 打扁螺丝



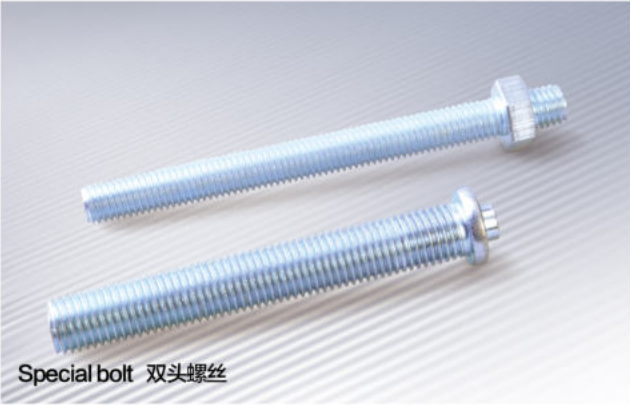
Special bolt 特殊螺丝



L bolt L型螺栓



Special nail 特殊螺钉



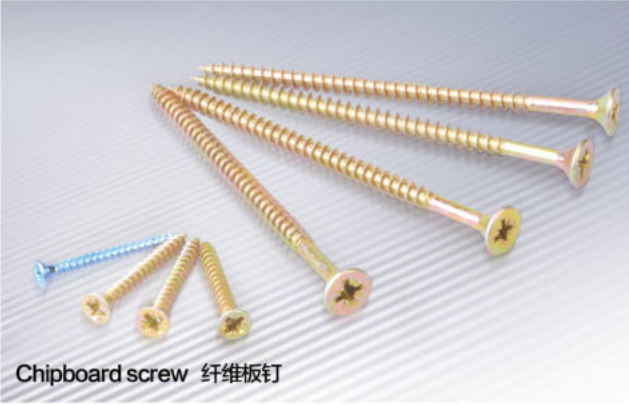
Special bolt 双头螺丝



Automotive bolt 汽车轮胎螺丝



Self drilling screw 鱼眼自攻螺丝



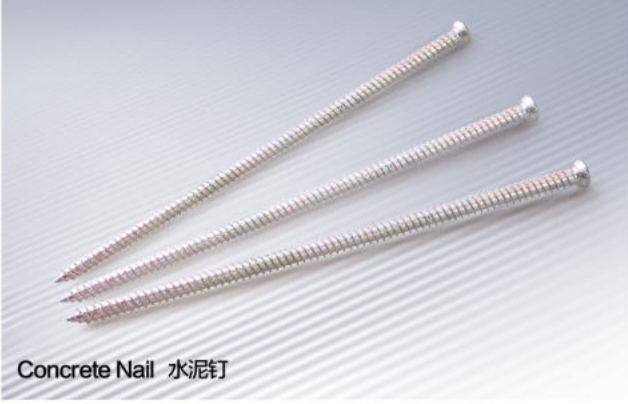
Chipboard screw 纤维板钉



Eye bolt 羊眼螺丝



Bushing 轴衬

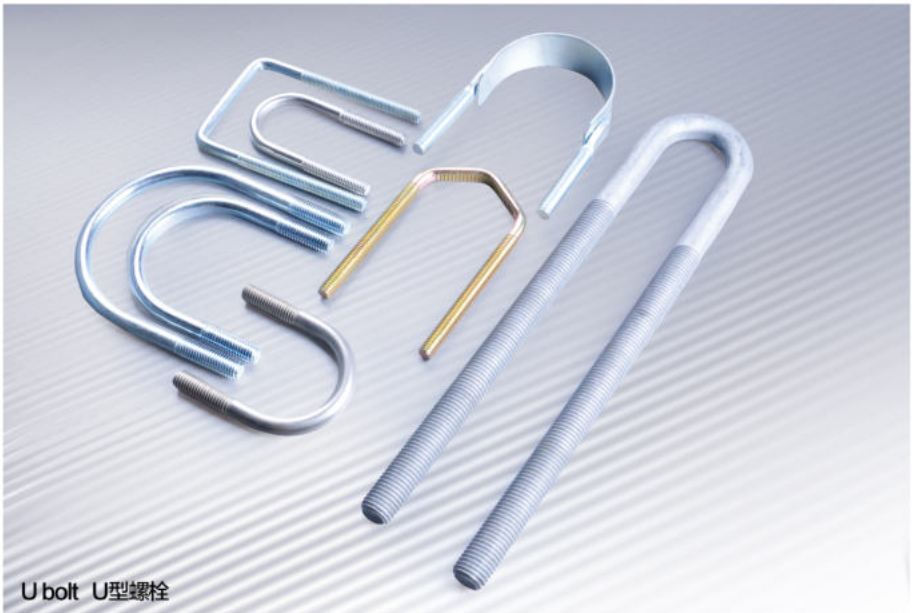


Concrete Nail 水泥钉



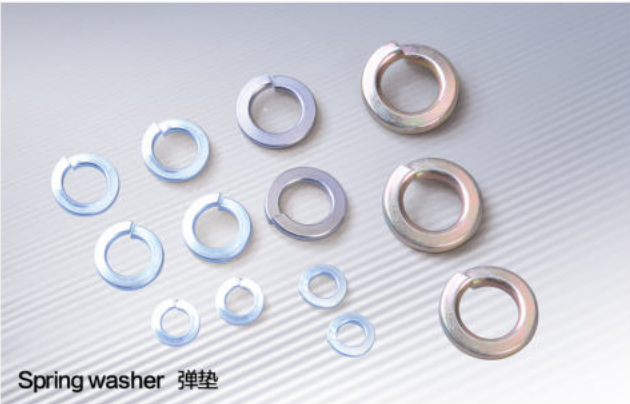
Drywall screw 干壁钉



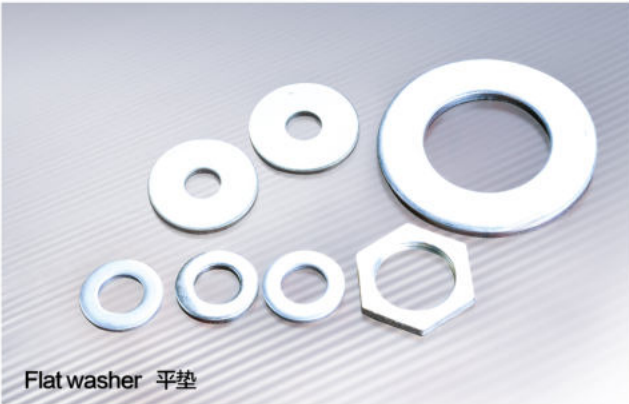


U bolt U型螺栓

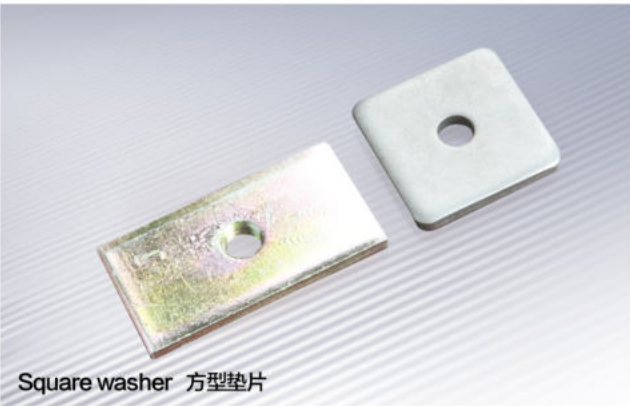
Washer Series 垫片系列



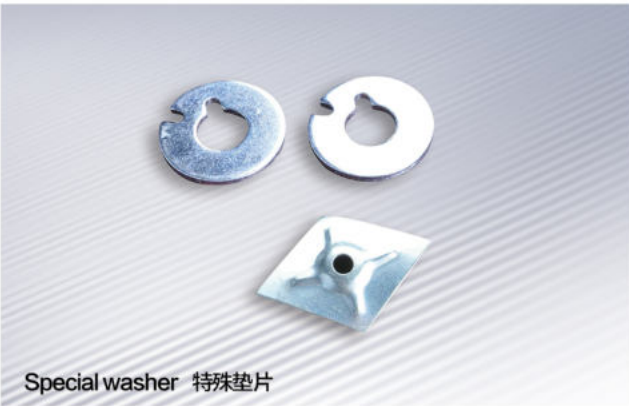
Spring washer 弹垫



Flat washer 平垫



Square washer 方型垫片



Special washer 特殊垫片



Anchors Series 膨胀系列



Hit anchor 锤击壁虎



Metal frame anchor 窗式壁虎



Slight sleeve anchor 羊眼壁虎



Wedge anchor 车修壁虎



Sleeve Anchor bolt 四片壁虎



Sleeve Anchor bolt 家具壁虎



Gravity Spring toggle anchor 挂钩

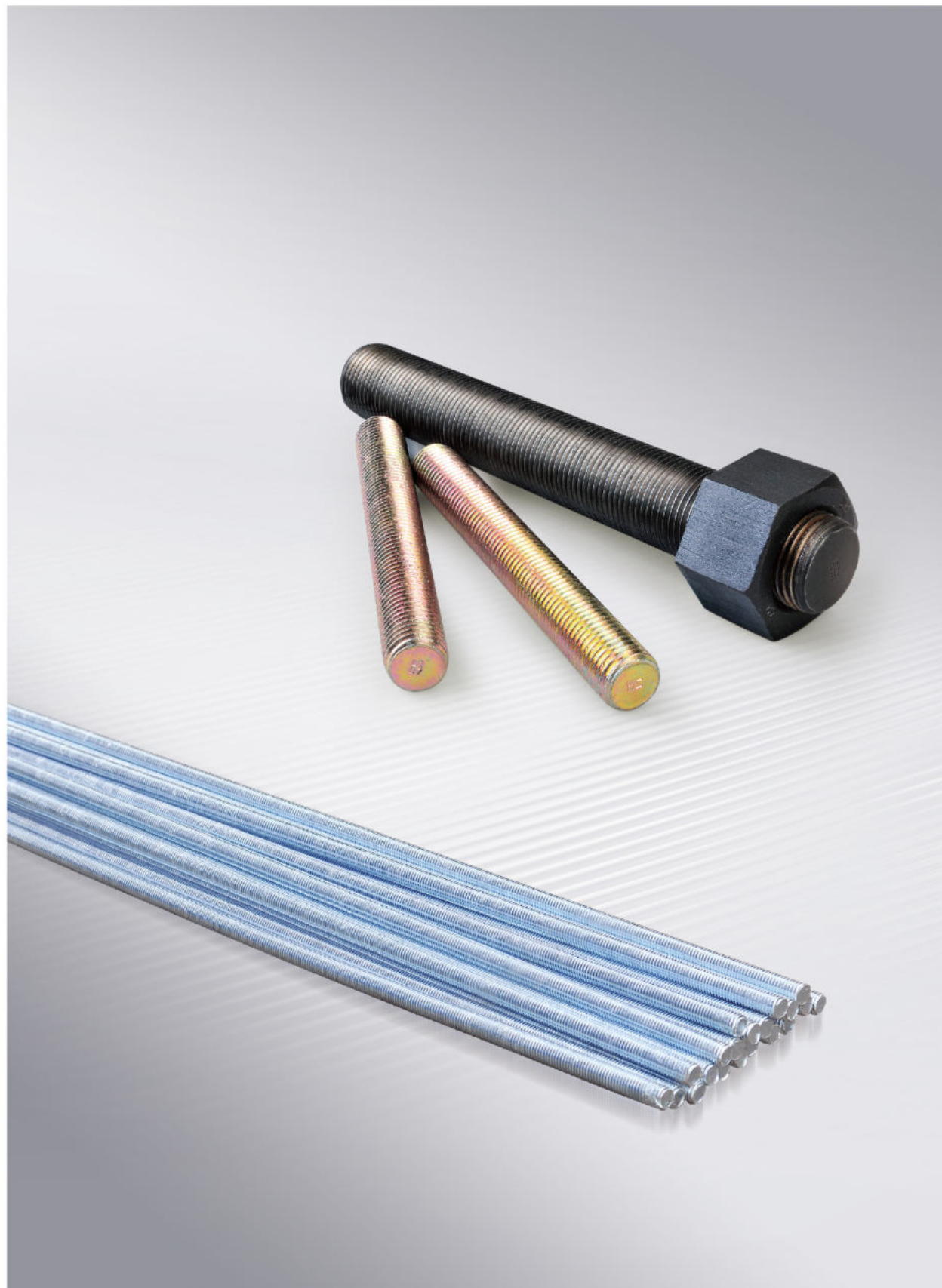


Toggle bolt 兰花夹





## Threaded rod 螺纹杆



## Manufacturing Process of Screws and Nuts 螺丝(螺母)制造过程

